



HINO

Australia

GA50002038

GA50002037



Fitting Guide

HINO 500 STANDARD CAB

MY19 MODEL

2 Post High Profile and Low Profile Bullbar
VEHICLE FRONTAL PROTECTION SYSTEM (VFPS)
FOR AIR BAG & ADR COMPLIANT VEHICLES

Index

Pages 2-3

Index and Important Information

Pages 4-5

Stage 1	Vehicle Preparation
Stage 2	Bumper Door End Cover Removal
Stage 3	Bumper Step cover removal
Stage 4	Bumper Plastics Removal
Stage 5	Bumper Plastics Removal
Stage 6	Bumper Plastics Removal

Pages 6-7

Stage 7	Wiring Harness Preparation
Stage 8	Headlight removal
Stage 9	Towhook Removal
Stage 10	Chassis Mount Installation
Stage 11	Chassis Mount Installation/ Alignment
Stage 12	Bumper Refitment

Pages 8-9

Stage 13	Bullbar Installation
Stage 14	Finishing connections & Checks

Pages 10-11

Fitting Kit
Torque Guide
Finished Product

NOTE: These instructions are to be used as a guide for installation of this component to the specified HINO model. Please ensure you check the component is applicability before installation. This work should be done by a qualified installer/technician and all care must be taken to ensure all steps are completed. Failure to do so may risk conformity to HINO component warranty and/or compliance. If you have any issues or concerns with this installation please contact 1300 01 HINO.

Important Information

This bullbar has been designed to allow the vehicle operator to use the wheel brace to tilt the bullbar for access to the engine compartment.

As the lug nuts are different from the FC-FD models to the FE Model the front bolt of the bullbar may require to be changed to suit, both bolts and nut plates are included with this bullbar.

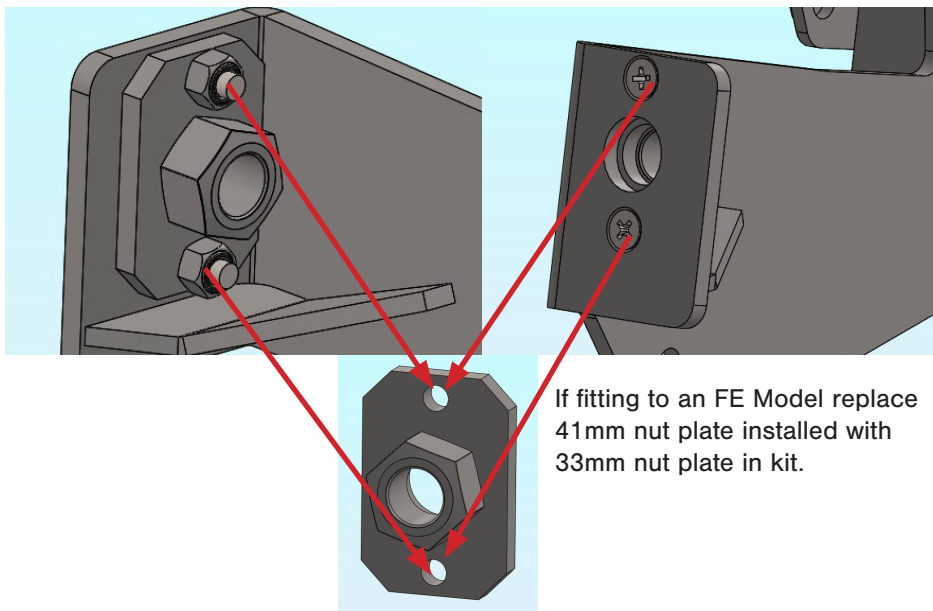
Please check and install:

FC - FD model - 41mm front bullbar bolt and nut plate installed on steel mounting brackets.

FE model - 33mm bullbar tilt bolt and nut plate supplied in kit.

Unbolt nut 41mm nut plate installed on steel mounting brackets four (2) M8 x 25mm countersunk bolts each side. Attach 33mm (angled corner) nut plates with removed M8 x 25mm countersunk bolts, flat washers and nyloc nuts.

NOTE: Bolt used should match wheel nuts - check with wheel brace in vehicle.



GA50002037 / GA50002038

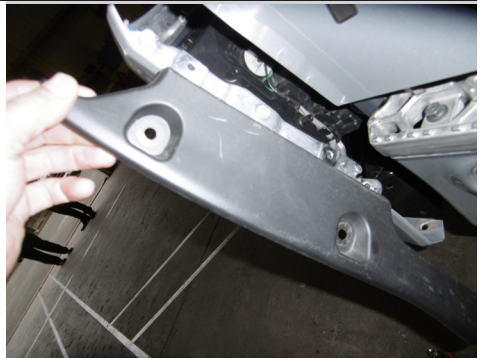
Stage 1

- Park the vehicle on level ground and apply the park brake.
- Check installation hardware and read fitting instructions before commencing.
- Lift bonnet.



Stage 2

- On end covers of bumper, remove two (2) push pull clips and one (1) 10mm head bolt on underside.
- Remove end cover.
- Remove two (2) 10mm head screws from behind covers.



Stage 3

- On front of bumper at ends of step, gently pull plastic cover forward.
- Remove covers.



HINO MY19 500 SERIES STANDARD CAB

Stage 4

- From underside of bumper remove seven (7) 10mm head screws.



Stage 5

- From bumper behind number plate, remove one (1) 10mm head bolt.
- Remove four (4) 10mm head nuts from behind of top center grille.
- Gently pull on ends of centre grilles to remove.



Stage 6

- Remove two (2) plastic push pull clips from inner edge of headlight panel. Gently pull to remove headlight panel.



GA50002037 / GA50002038

Stage 7

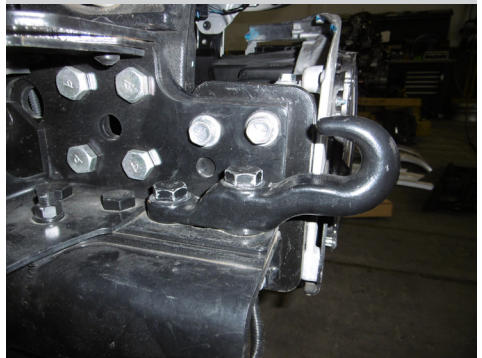
- Unplug headlights from wiring.
- Unclip wiring and remove center grille from vehicle. Two (2) 14mm head bolts, two (2) 12mm head bolts and one (1) 14mm head nut (per side).
- Remove headlights and headlight mounting brackets from chassis rail bracket.

NOTE: It is easiest to remove all the bolts from the front leaving the top bolt till last. Ensure lights are supported when removing.



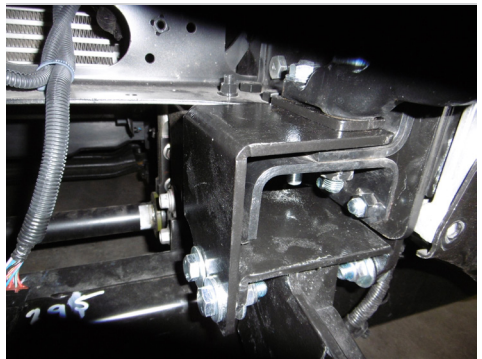
Stage 8

- Remove tow hook, two (2) 22mm head bolts from passengers side of vehicle and two (2) 22mm head bolts from top front of chassis rail on drivers side.



Stage 9

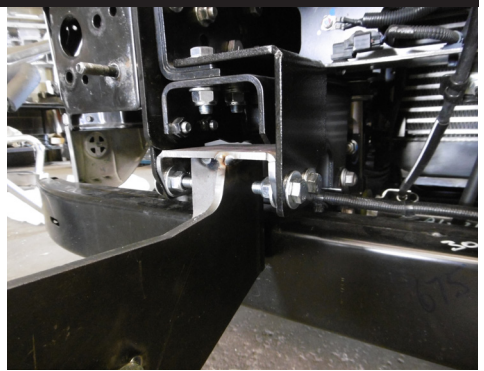
- Working on passengers side - Fit angle steel and tow hook on top of chassis rail using two (1) M14 x 80 bolt and one (1) M14 x 70 bolt to rear hole, flat washer and nyloc nuts. **Finger tighten only.**
- Fit inner chassis plate to inside of chassis using two (2) M12 x 1.25 x 40 bolts, spring washers and flat washers.
- **Finger tighten only.**
- Install lower steel mount between upper mounts and attach using four (4) M12 x 1.25 x 40 bolts. **Finger tighten only.**



HINO MY19 500 SERIES STANDARD CAB

Stage 10

- Working on drivers side - Fit angle steel bracket on top of chassis rail using two (2) M14 x 50 bolts, flat washer and nyloc nuts. **Finger tighten only.**
- Fit outer chassis plate to outside of chassis using two (2) M12 x 40 bolts, flat washers and nyloc nuts. **Finger tighten only.**
- Install lower steel mount between upper mounts and attach using four (4) M12 x 40 bolts. **Finger tighten only.**



Stage 11

- Align mount to the truck. Using a level, ensure front of mount is vertical and across mounts from left to right of chassis is horizontal.
- **Tighten all bolts.**
- **Check front bolts in bullbar match wheel nuts. Should the bolt head size not match, change rear nut plate by removing two (2) M8 countersunk screws (per side) and reinstalling new plate as per important information on page 3**



Stage 12

- Refit lights and bumper as per reverse of steps 2 to 8.
- Trim lower grille around mounts as refitting. See template in this instruction.



GA50002037 / GA50002038

Stage 13

- Place bullbar on vehicle.
- Align front bolt holes in channel and fit the applicable size bolt to suit the wheel brace in the truck FC-FD models M27 bolt, nylon washer and flat washer, FE 7/8 x 2.5 bolt, M24 nylon washer and flat washer.
- Fit hinge bolts to lower mount hole using M12 x 75 bolts, flat washers and nyloc nuts (supplied).
- Hand tighten M12¹ bolts to be firm to alloy only.



Stage 14

- Check and align lights to correct levels.
- Tilt bar to ensure clearance of lights and cabin.
- Place tilt warning sticker in a prominent position on rear of cabin next to the tilt release lever.

HINO MY19 500 SERIES STANDARD CAB

Fitted to bullbar

1 x Pair steel mounts

Supplied in Fitting Kit

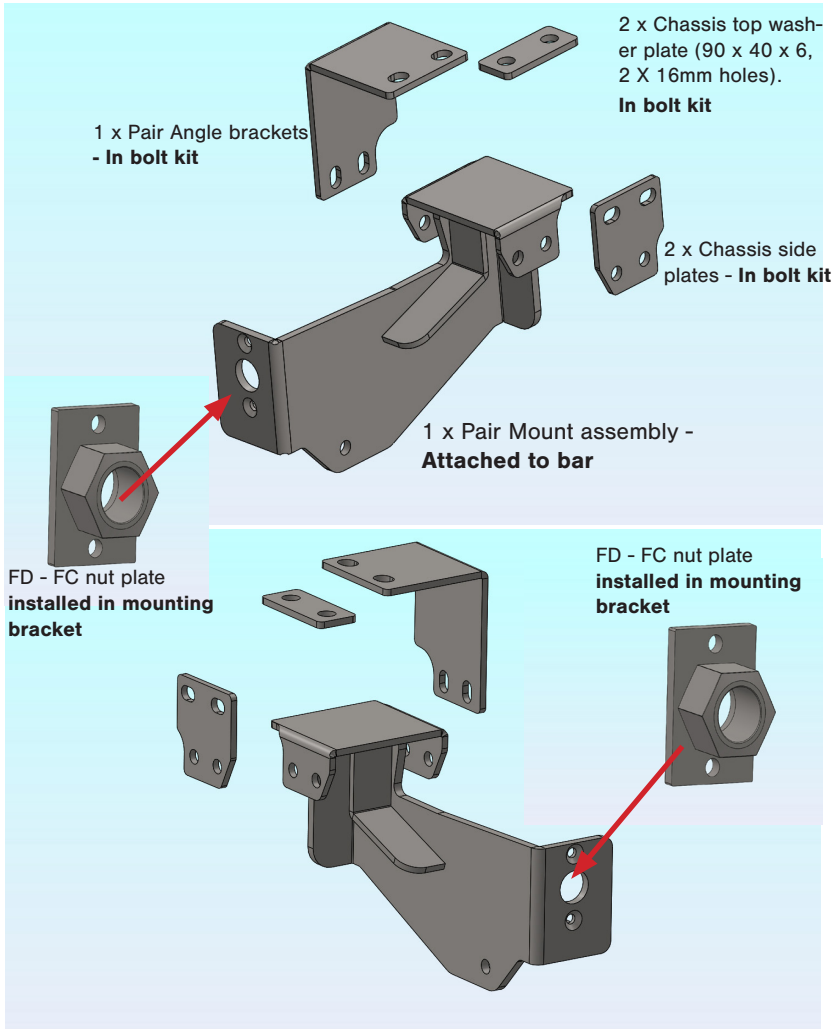
1 x Pair angle brackets

2 x Chassis plates

1 x Chassis top washers

2 x FE bolt plates

2 x FD - FC bolt plates



Fitting Kit

Fitted to Bar

1 - Pair Steel Mounting Brackets (YP2HN6550SY)	4 - M8 nyloc nuts (attach to mount)
2 - M27 nut plate (Square corners)	2 - M12 x 1.75mm 75mm bolts (used for hinge bolt)
2 - M27 x 60mm bolts (used in eye bolt holes)	2 - M12 x 1.75 Nyloc nuts (used for hinge bolt)
2 - M27 Nylon washers (front face of bar)	4 - M12 flat washers (used for hinge bolt)
2 - M27 Flat washers (front face of bar)	1 - Hino Lettering
4 - M8 x 1.25 x 25mm Countersunk bolts (attach to mount)	8 - 4mm starlock fasteners
4 - M8 flat washers (attach to mount)	

Fitting Kit

1 - Pair steel angle brackets (P2HN6550_E6M)	4 - M14 x 1.5 nyloc nuts
2 - Steel chassis plates (P2HN6550_A6M)	8 - M14 x 1.5 flat washers
2 - Steel top washers (90x40x6mm, 2 x 16mm holes) (P2HN6550_P6M)	2 - M12 x 1.75 nyloc nuts (replacements for hinge bolt nuts if required)
2 - 7/8 nut plates (angled corners)	12 - M12 x 1.25 x 40mm bolts
2 - 7/8 x 2.5 bolts	20 - M12 flat washers
2 - M24 nylon washers	4 - M12 spring washers
2 - M24 flat washers	8 - M12 x 1.25 nyloc nuts
1 - M14 x 1.5 x 80mm bolt	4 - M8 nyloc nuts (for nutplates if required)
1 - M14 x 1.5 x 70mm bolt	6 - 300mm zip ties
2 - M14 x 1.5 x 50mm bolts	1 - Tilt warning sticker

Torque Guide

Diameter	Thread Pitch	Recommended Assembly Setting	
M6	1.0mm	8 Nm	5.9 lbft
M8	1.25mm	17 Nm	12.5 lbft
M10	1.5mm	30 Nm	22 lbft
M12	1.25mm	45 Nm ¹	33 lbft ¹
M14	2mm	56 Nm	41.3 lbft
M16 ¹	2mm	73 Nm	53.8 lbft
7/8 M27	9 TPI 3mm	Hand tightened firmly only as overtightening will damage nylon washer	

Notes:

1. M12 bolts used to secure bullbar to steel mount require to be tightened only to touch the alloy mount firmly. Overtightening of this bolt will result in damage to the bullbar and possible inability to align bullbar correctly to vehicle.

Finished Product



REPLACES: N/A
REVISED: 06.11.18

